



Cultural heritage in the Trebon Basin, Czech Republic: past, present and future

Iris C. Bohnet & Kristina Janeckova Molnarova

BUDOUCNOST ČESKÉHO RYBÁŘSTVÍ V OBDOBÍ TURBULENTNÍCH ZMĚN
Conference, 14 September 2021, CZU



EUROPEAN UNION
European Structural and Investment Funds
Operational Programme Research,
Development and Education



Outline

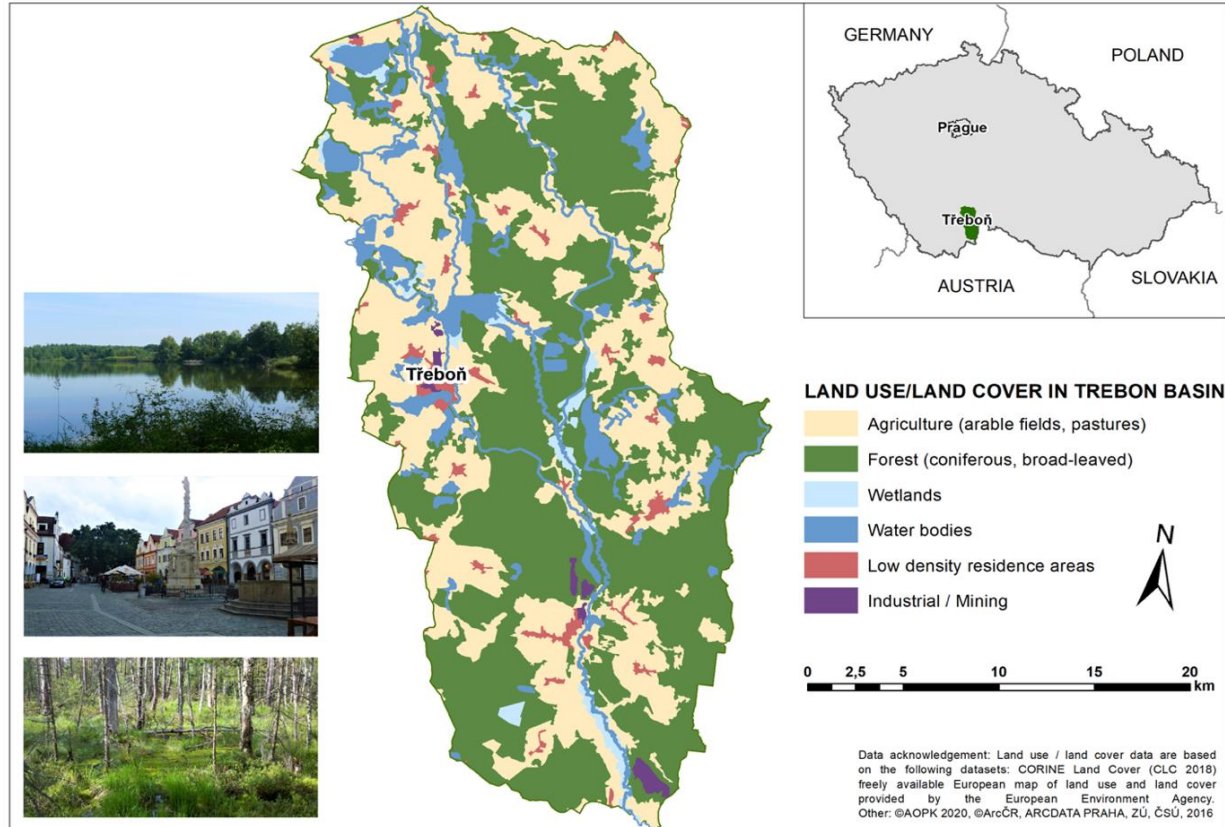
- **Cultural heritage in the Trebon Basin - 460 artificial fish ponds**
 - Historical development since human settlement
- **Current uses, values and functions**
 - A narrative review to examine the various narratives that emerged over time
- **Potential futures – contested values**
 - Need for acknowledging the multiple functions, uses and values of the fish ponds



Cultural heritage in the Trebon Basin

Some facts:

- Located in South Bohemia near the Austrian border
- Covers an area of about 700 km²
- Landcover types include:
 - waterbodies (including 460 artificial fishponds/lakes; 7%)
 - forests (coniferous/broad-leaved 45%)
 - agricultural (arable fields/pastures 36%)



(Bohnet et al. 2021, in review)



Czech University of Life Sciences Prague

Faculty of Environmental
Sciences



3



Cultural heritage in the Trebon Basin - past



(Photo credits: Archiv Vydavatelství MCU s.r.o, PLA Adm. Miroslav Hatle, Prof. Elizabeth Brabec)

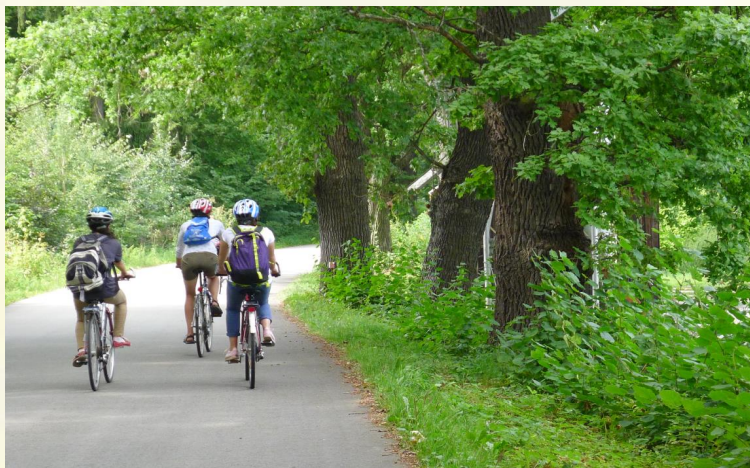


Czech University of Life Sciences Prague

Faculty of Environmental
Sciences



Current uses, values and functions



(Photo credit: <https://www.jiznicechy.cz/turisticke-cile/1397-chko-trebonsko>, Prof. Elizabeth Brabec)



Multiple narratives exist in the Trebon Basin

Focus of landscape narrative	Key landscape features prominent in landscape narrative	Activities associated with landscape narrative/human connections to place
Cultural heritage (CH)	Fishponds and associated infrastructure such as canals, gutters and pipes; historical monuments and buildings	Fish farming (knowledge of historical fish farming practises); recreational activities such as hiking and canoeing to celebrate and learn about the CH
Nature conservation	Fishponds, wetlands, peat bogs	Recreational activities such as hiking and bird watching to celebrate and learn about nature (plants and animals)
Fish production	Fishponds and associated infrastructure	Fish farming (including changing ways of fish production, e.g., intensive production, organic production)
Health and well-being (spas)	Peatbogs	Peat extraction for treatments in the Trebon spas; regeneration and relaxation in Trebon spas
Recreation	Fishponds; rivers; canals; dams; forests; town	Recreational activities including hiking, cycling, canoeing, angling, mushroom and berry picking, picnicking, hunting
Flood retention	Fishponds and associated infrastructure; wetlands	Management of fishponds and associated infrastructure as well as wetlands for flood regulation and retention

(Bohnet et al. 2021, in review)



Potential futures – contested values



(Photo credit: Zuzana Boukalova; Zuzana Musilova)



Challenges and preconditions for a sustainable development

Focus of landscape narrative	Challenges for a sustainable development in the Trebon Basin	Preconditions supporting a sustainable development in the Trebon Basin
Cultural heritage (CH)	Recognition of CH as dynamic and shaped by social processes and uses over time	Recognition of the multifunctional role of the fishponds, e.g. for fish production, recreation, nature conservation, flood retention
Nature conservation	Narrow view of CH for nature conservation (aligned with environmental legislation)	Recognition of the need to depart from a sectoral governance approach that aligns only with environmental legislation
Fish production	Narrow view of fish production for economic gains without considering environmental degradation	Recognition of the need to depart from a sectoral governance approach that aligns only with fishing industry guidelines
Health and well-being (spas)	Recognition of limits to the extraction of peat for spa treatments	Recognition of the global conservation value of peat taking global stakeholders promoting peat conservation worldwide seriously
Recreation	Need to balance different uses and needs for recreation to continue into the future	Recognition of the need to include the diverse range of recreational stakeholders in collaborative governance and planning processes
Flood retention	Narrow view of flood retention value that this landscape provides without considering other interests and needs	Need for discussion about visions of the future for the Trebon Basin, including the requirement to manage floods, in particular under a changing climate

(Bohnet et al. 2021, in review)



Preconditions supporting a sustainable future development

Emerging preconditions supporting and linking future visions of cultural heritage and sustainable development:

- Recognising the multifunctionality of landscapes
- Taking a collaborative governance approach to foster actions supporting sustainable development
- Encouraging adaptive landscape planning and management for cultural heritage (CH) to enrich sustainable development



Thank you!

Dr. Iris Bohnet
Senior Researcher

t +420 224 382148

e bohnet@fzp.czu.cz



Czech University of Life Sciences Prague

Faculty of Environmental
Sciences



10

